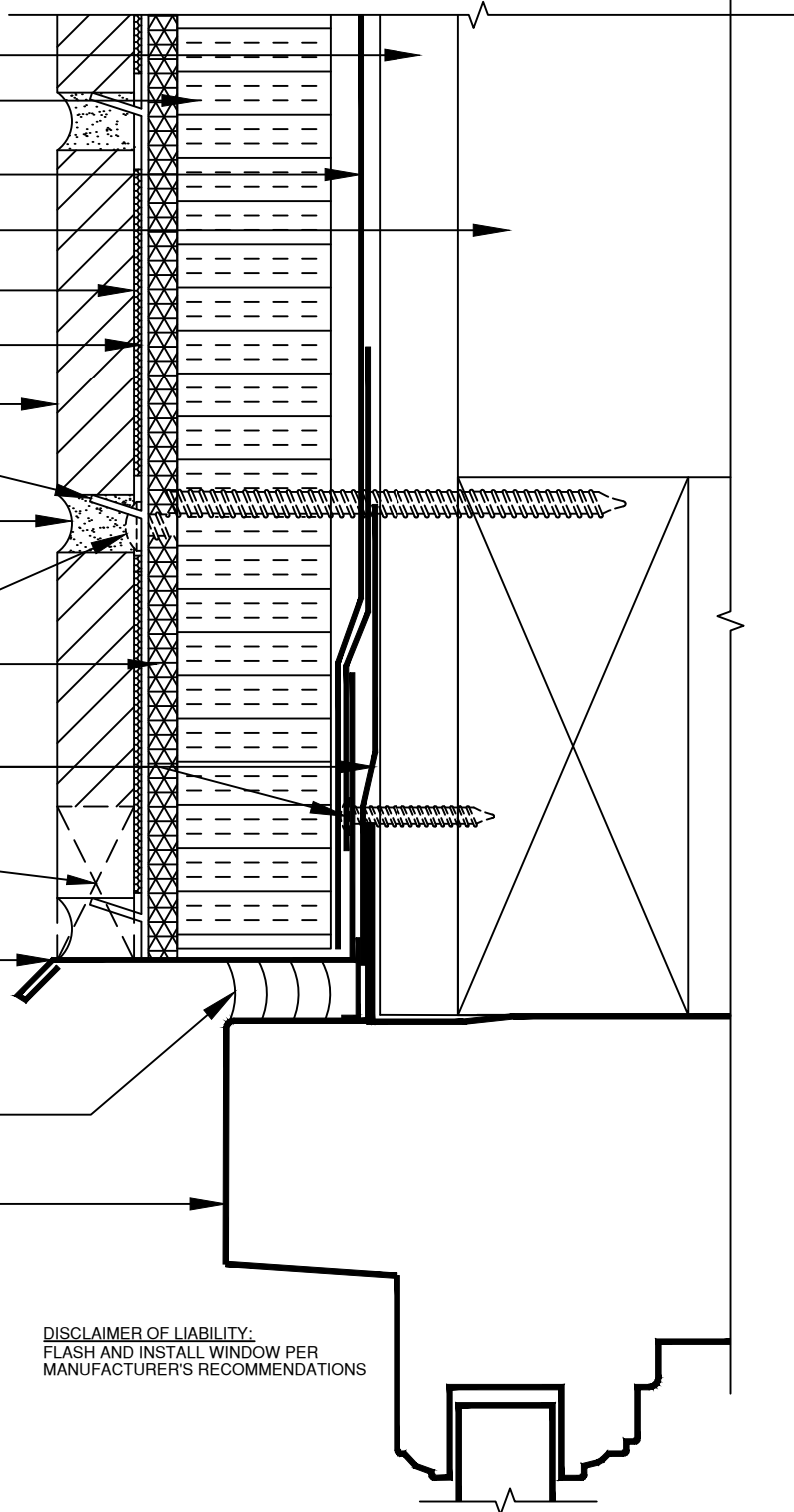


SUBSTRATE  
 RIGID INSULATION  
 AIR/WATER RESISTIVE BARRIER AS REQUIRED  
 WALL CONSTRUCTION  
 ADHESIVE  
 CLASSIC PANEL  
 MASONRY VENEER  
 SUPPORT TIE  
 MORTAR  
 CORROSION RESISTANT FASTENER  
 GLEN-GERY DRAINAGE MAT  
 FLASHING MEMBRANE/ TRANSITION TAPE  
 WEEP HOLES MAX 24" ON CENTER  
 STARTER ANGLE FASTENED TO SUBSTRATE  
 MOVEMENT JOINT (TYP)\*  
 WINDOW



## RECESSED WINDOW HEAD WITH INSULATION DETAIL

CLASSIC

NOTE: FASTENER PENETRATION - WOOD STUD- 1 1/4" MIN., STEEL STUD - 3 THREADS MIN., CONCRETE - 1" MIN.  
 CALL FOR INSULATION WIDER THAN 2" RIGID INSULATION (MUST MEET ASTM C578 OR ASTM C1289)

(MIN. 15 PSI COMPRESSIVE STRENGTH)

\*USE BACKER ROD WHERE JOINT DEPTH >3/4"